

Figure 9-44 Mortar joint profiles can affect water penetration into the wall.

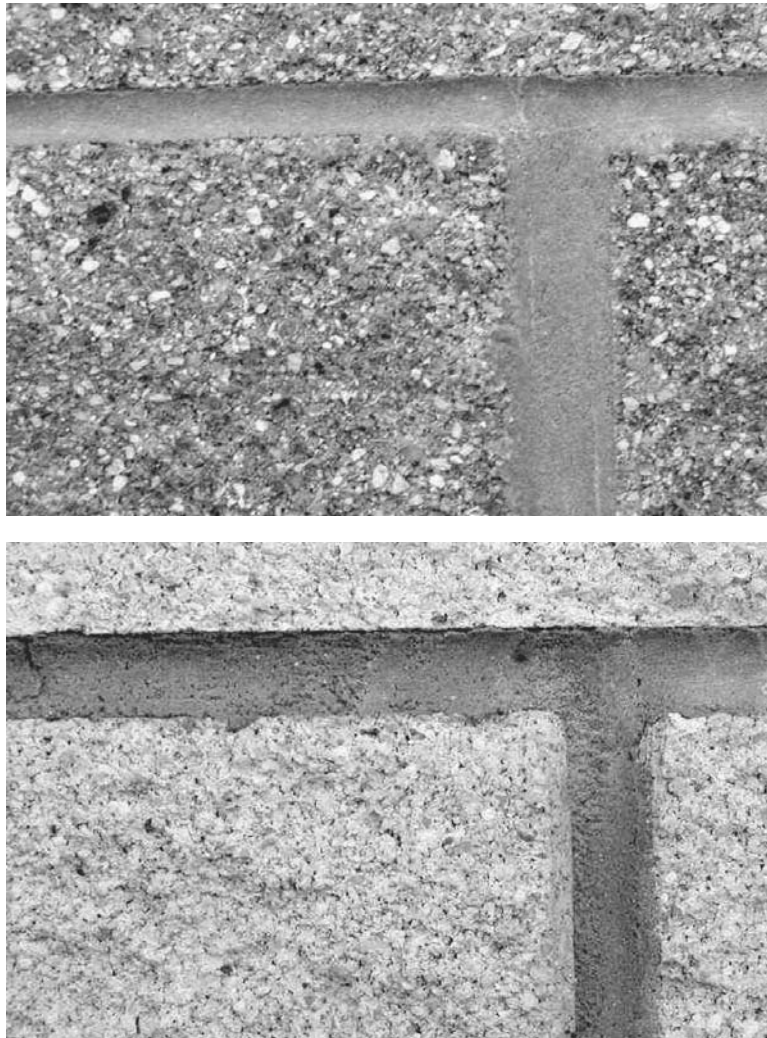


Figure 9-45 Good workmanship produces a joint with tight, compacted surface and good bond line adhesion. Poor workmanship produces rough joints with voids at the unit-mortar interface.

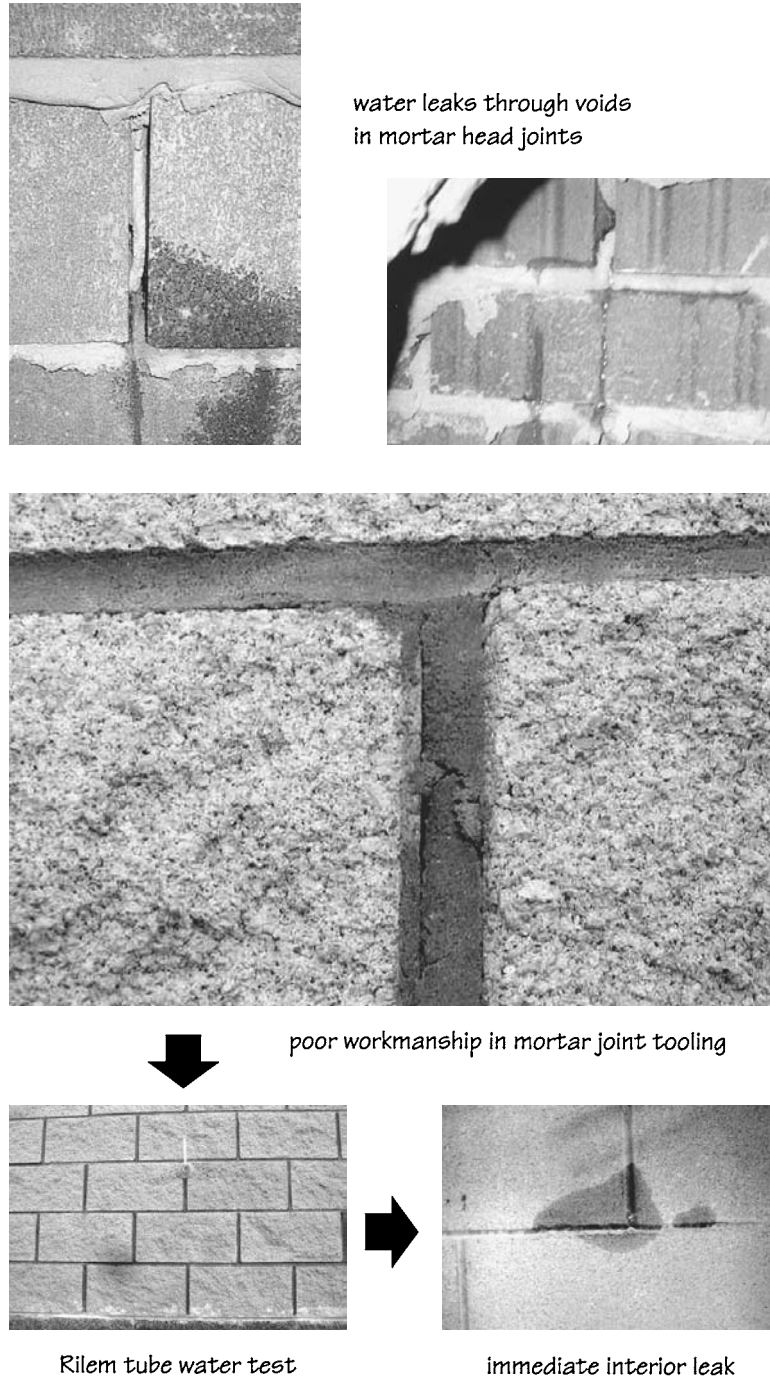


Figure 9-46 Poor workmanship in mortar joints increases water penetration through masonry walls.

that cavities of double-wythe walls and veneer walls are kept clean and the weep holes free of mortar droppings and bridges.

9.4.3 Material Selection

Proper selection of masonry units and mortar for expected weathering conditions is also an important factor. Clay brick for exterior use should conform